

NXT active RADIUS Bass

Ned Steinberger's approach to the RADIUS series, as with every new instrument, has been to re-explore each facet of a bass guitar, leading to innovations that provide the player with amazing physical comfort, exceptional performance and unparalleled versatility. The new NXTa brings together the brilliant ergonomics of the headless neck and body configuration, the NS self-clamping tuning system, custom NS/EMG™ pickups, volume-volume-tone controls, and the battery-free Dual Mode Output electronics made for NS by Mi-Si™.

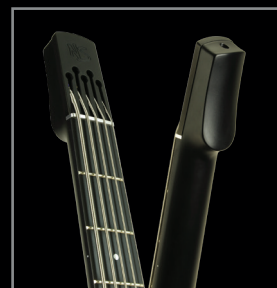
Fretted or fretless, 4 string (NXT4a) or 5 string (NXT5a), the NXTa Radius Bass Guitar is beautifully crafted in the Czech Republic and is made from solid, straight grain maple, with maple face (Satin Black model) or flame maple face (Sunburst model).



Features

NXTa RADIUS Neck

The headless, bolt-on maple neck has 24 frets, a 34" scale for the NXT4a and 35" scale for the NXT5a, and a familiar 15" radius. A volute provides thumb reference at the nut. String slots in the aluminum headplate eliminate the need for a headstock with heavy tuning machines. Conveniently accessed from the top of the neck, the steel double-action reinforcing truss rod, gives both rigidity and precise relief control.



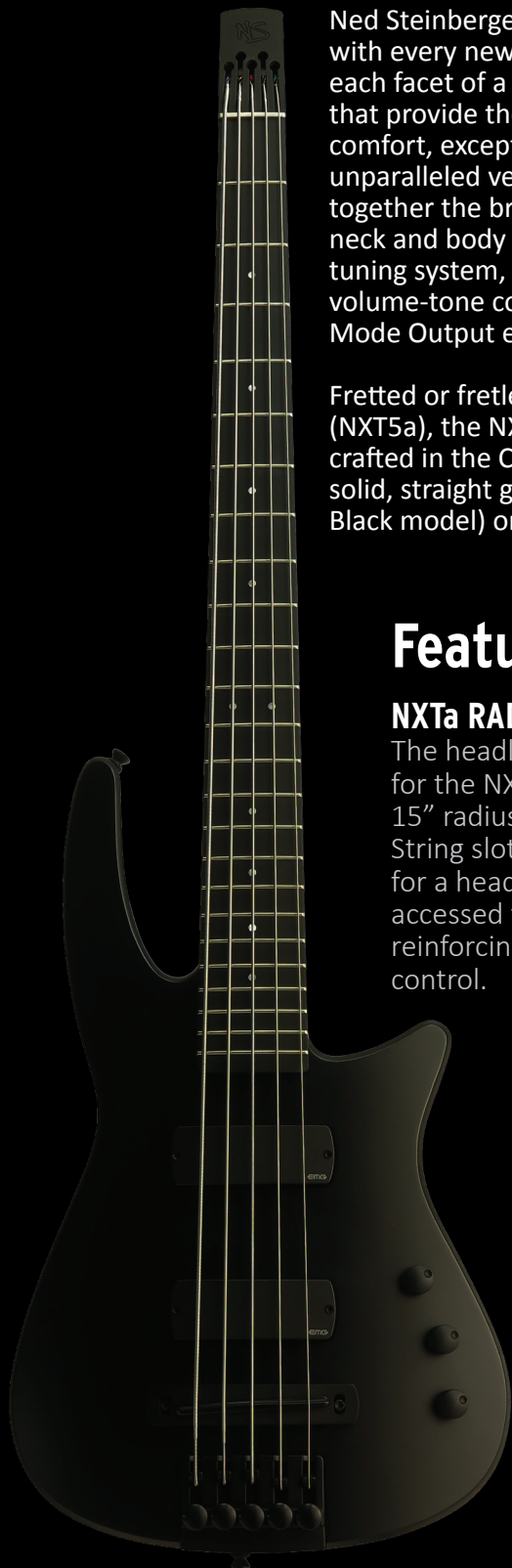
NS Diradial™ body

The concave back profile provides a sense of comfort and stability against the torso. The front of the instrument is more tightly radiused, which, in with the general wedge shape of the body, creates a more comfortable orientation to the right hand. The configuration of the body cutaway provides easy access to the highest frets.



Perfectly balanced, the NXTa has no downward dip of the neck, for effortless left-hand freedom. Combined, the shape, balance and light weight make this instrument incredibly comfortable to play.

NS
DESIGN™



NXT active RADIUS Bass

Features (Continued)

Dual Mode Active/Passive Electronics

The NS/EMG Radius features custom magnetic pickups with a radiused top and magnetic structure designed to optimally capture the full richness of tone from every string. The controls are a familiar Volume-Volume-Tone configuration. The Tone control is also a push-pull knob, used to select between the NXTa's active or passive output modes. The active mode is battery-free; the



special supercapacitor-based circuitry charges in 60 seconds to deliver active output for 16 hours from the time of the charge. The instrument is supplied with an AC charger which plugs into the output jack.

Patented Self-Clamping Tuning System

Fast and simple, this self-clamping precision tuning system is integrated into the body of the RADIUS. Any standard single-ball end, full-scale bass guitar string can be used – simply rotate the knurled knob for a quick string change and to bring it to precise pitch.

Bridge & Saddle

The aluminum one-piece bridge and saddle assembly provide broad height and angle adjustment. Allows the player to precisely tailor the action and adjust the intonation.

Gig Bag

The RADIUS bass guitar includes a padded gig bag with a handle, adjustable backpack straps and a large front zipper pocket with room for cables and gear. The loaded gig bag will fit in the overhead compartment of most commercial aircraft.



Strings and Accessories

D'Addario™ EXL170 Nickel Round Wound Strings.
Active Mode power supply- AC-charged super-capacitor circuitry.
Owner's Manual and tool kit.

Specifications

Dimensions:	NXT4a	NXT5a
Overall Length	41.5"	42.25"
Body Length	20.8"	20.8"
Neck scale	34"	35"
Neck radius	15"	15"
Weight	7.8lbs	8.6lbs
Bridge Spacing	19mm	18mm
Nut Width	1.60"	1.85"
12th Fret Width	2.2"	2.5"

NS
DESIGN™

